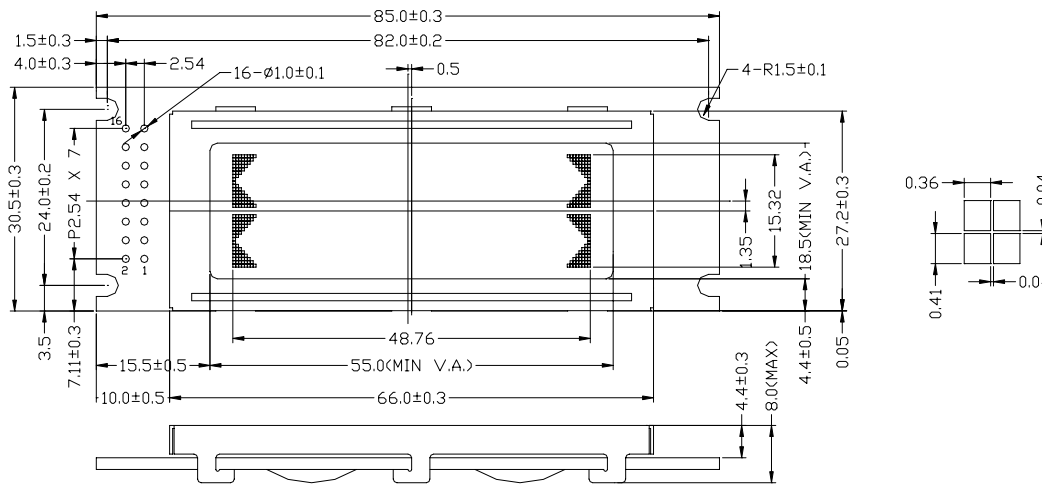


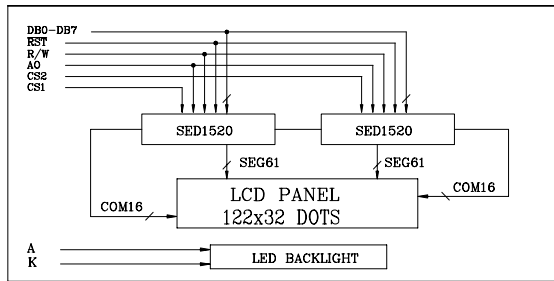


EXTERNAL DIMENSIONS:

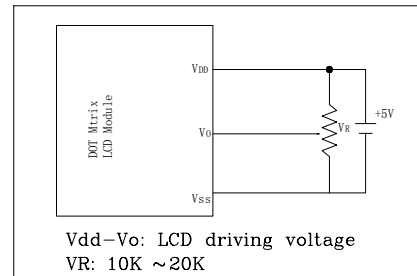
[ ] For LED Backlight



BLOCK DIAGRAM:



POWER SUPPLY:



MECHANICAL SPECIFICATIONS

ITEM	SPECIFICATION	UNIT
Module Size (WxHxT)	85.0x30.5x8.0[14.0]	mm
Viewing Area (WxH)	55.0x18.5	mm
Dot Number (WxH)	122x32	dots
Dot Size (WxH)	0.36x0.41	mm
Dot Pitch (WxH)	0.4x0.45	mm
LCD MODE	STN(Y/G,Gray,Blue),FSTN	

ABSOLUTE MAXIMUM RATINGS

PARAMETER	SYMBOL	MIN.	MAX.	UNIT
Power Supply (logic)	Vdd-Vss	-0.3	7.0	V
Power Supply (LCD)	Vdd-Vo	0.3	15.0	V
Input Voltage	Vi	-0.3	Vdd+0.3	V
Operating Temperature	Topr	0	50	°C
Storage Temperature	Tstg	-20	70	°C

PIN ASSIGNMENT

PIN	SYMBOL	FUNCTION
1	Vss	Power Supply (0V)
2	Vdd	Power Supply (+5V)
3	Vo	Contrast Adjust
4	/RST	Reset
5	E1	Enable Signal 1
6	E2	Enable Signal 2
7	R/W	Read/Write
8	RS	Data/Instruction Register Select
9~16	DB0~DB7	Data bus Line
17	A	Power Supply for LED BL (+)
18	K	Power Supply for LED BL (-)

ELECTRICAL CHARACTERISTICS (Ta=25°C)

ITEM	SYMBOL	CONDITION	MIN.	TYP.	MAX.	UNIT
Power Supply (logic)	Vdd	-	4.5	5.0	5.5	V
Supply Current (logic)	Idd	VDD=5.0V	2.0	-	-	mA
Driving Voltage (LCD)	Vdd-Vo		4.0	4.7	5.0	V
Driving Current (LCD)	Ilcd		0	2	-	mA
Input Voltage "H"	Vih		2.2	-	Vdd	V
Input Voltage "L"	Vil	-0.3	-	0.6	V	
Output Voltage "H"	Voh	Ioh=-0.205mA	2.4	-	-	V
Output Voltage "L"	Vol	Iol=1.2mA	-	-	0.4	V

LED BACKLIGHT SPECIFICATIONS(SIZE TYPE)

PARAMETER	TYP.	ITEM	TYP.
Forward Voltage	4.2V	Power Dissipation	504mW
Forward Current	120mA	Emission Wavelength	nm