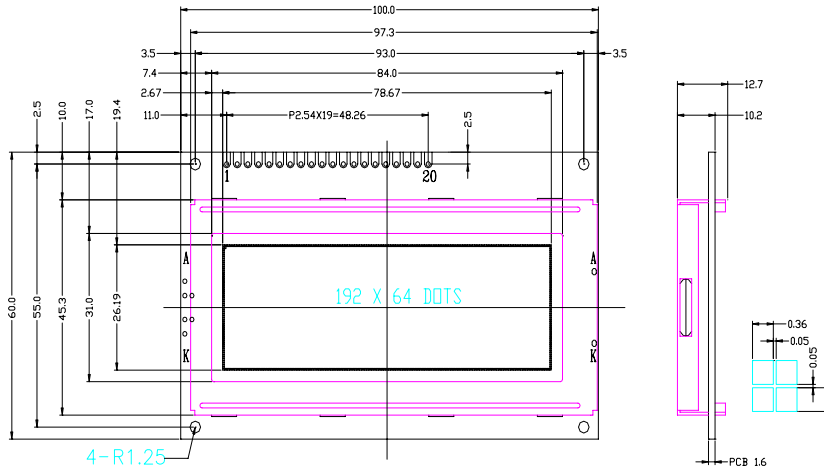


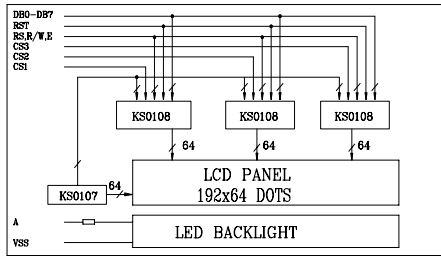


• EXTERNAL DIMENSIONS:

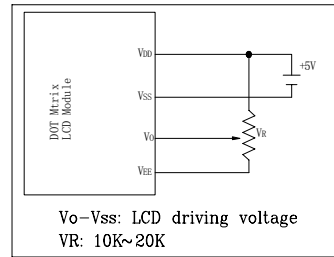
[ ] For LED Backlight



• BLOCK DIAGRAM:



• POWER SUPPLY:



MECHANICAL SPECIFICATIONS

ITEM	SPECIFICATION	UNIT
Module Size (WxHxT)	100.0x60.0x11[12.5]	mm
Viewing Area (WxH)	84x31	mm
Dot Number (WxH)	192x64	dots
Dot Size (WxH)	0.36x0.36	mm
Dot Pitch (WxH)	0.51x0.51	mm
LCD MODE	STN(Y/G,Gray,Blue),FSTN	

ABSOLUTE MAXIMUM RATINGS

PARAMETER	SYMBOL	MIN.	MAX.	UNIT
Power Supply (logic)	Vdd-Vss	-0.3	7.0	V
Power Supply (LCD)	Vdd-Vo	0.3	15.0	V
Input Voltage	Vi	-0.3	Vdd+0.3	V
Operating Temperature	Topr	0	50	°C
Storage Temperature	Tstg	-20	70	°C

PIN ASSIGNMENT

PIN	SYMBOL	FUNCTION
1~8	DB0~DB7	Data bus Line
9	E	Enable Signal
10	R/W	Read/Write select
11	RS	Data/Instruction Register Select
12	Vo	Contrast Adjust
13	Vdd	Power Supply (+5V)
14	Vss	Power Supply (0V)
15	CSA	Chip select 2
16	CSB	Chip select 3
17	VEE	Negative Power Out
18	/RST	Reset Singal
19~20	A,K	LED BL (+),(-)

ELECTRICAL CHARACTERISTICS (Ta=25°C)

ITEM	SYMBOL	CONDITION	MIN.	TYP.	MAX.	UNIT
Power Supply (logic)	Vdd	-	4.5	5.0	5.5	V
Supply Current (logic)	Idd	VDD=5.0V	3.0	-	-	mA
Driving Voltage (LCD)	Vdd-Vo		10.0	12	14.0	V
Driving Current (LCD)	Ilcd		0	3	-	mA
Input Voltage "H"	Vih		2.2	-	Vdd	V
Input Voltage "L"	Vil		-0.3	-	0.6	V
Output Voltage "H"	Voh	Ioh=-0.205mA	2.4	-	-	V
Output Voltage "L"	Vol	Iol=1.2mA	-	-	0.4	V

LED BACKLIGHT SPECIFICATIONS(SIZE TYPE)

PARAMETER	TYP.	ITEM	TYP.
Forward Voltage	5.0V	Power Dissipation	400mW
Forward Current	80mA	Emission Wavelength	nm